



**College of Engineering  
Annual Report  
April 16, 2014**

## OVERVIEW

Although this is a transition year for the College as the search for a new permanent dean is underway, the accomplishments of the College have been significant.

By far, the most important accomplishment has been a successful ABET accreditation review and visit. Self-studies for seven BS programs in engineering and computer science were submitted to a nine-member ABET team in early July 2013. A three-day on-campus visit by the team was completed on October 1. When they left campus, the ABET team had found no weaknesses or deficiencies in any of the programs. We expect that when we receive the final report from ABET, sometime in August 2014, all of our programs will be accredited for the maximum six years. Successful ABET accreditation provides our students and prospective employers assurance that our programs meet the same rigorous criteria that other similar engineering and computer science programs across the country and the world must meet. It is a clear indication of the dedication of our faculty and staff to provide our students with a high quality education.

Our College, along with the College of Business and the College of Arts and Sciences, was awarded a Targeted Educational Attainment (TEAm) grant funded by the Florida Legislature. USF is partnering with the University of Central Florida and Florida International University on the \$4.9 million project. The funds will allow our College to expand course offerings in computer science, computer engineering and information technology to meet the student demand placed on these disciplines.

The number of undergraduate students who select engineering as a major at USF continues to increase. Engineering's undergraduate headcount for fall 2013 was up by 13% over fall 2012 while MS student headcount was up 14%. PhD student headcount has remained virtually unchanged during the same time period. Undergraduate sch production in the college has increased by 7% over last academic year, while Grad I sch production increased by nearly 10% and Grad II production decreased by ~ 5%.

The retention rate for undergraduate engineering students has shown a significant increase of 6.6% over previous years' retention rates. The College's addition of course-based learning communities and early warning system, along with expansion of living learning communities are likely responsible for these improvements in retention.

The research accomplishments of the college continue on an upward trend. Two faculty from the Dept. of Electrical Engineering, Selcuk Kose and Gokhan Mumcu, received NSF CAREER Awards. For the first time in the college's history research expenditures exceeded \$30M for the year with an increase of more than \$2.2M from the previous year.

Following on the heels of the NSF \$3.9M PIRE wastewater grant awarded last year, Professor Jim Mihelcic is the PI for a \$2.22M grant from the U.S. Environmental Protection Agency to establish a national research center to tackle a dire issue plaguing waterways in Florida and across the country: nutrient pollution from wastewater and storm water runoff. The USF Center for Reinventing Aging Urban Infrastructure for Nutrient Management (*RAINmgt*) will develop integrated research and

demonstration projects focused on nutrient pollution management technologies while also developing regional models that determine appropriate solutions from the household to city levels.

The National Center for Transit Research (NCTR) was selected as a Tier 1 University Transportation Center with a two year designation of \$2.8+M awarded by the U.S. Department of Transportation.

The Center for Urban Transportation Research was awarded \$4.5M by the Florida Department of Transportation to implement Florida's Bicycle and Pedestrian Safety Program.

The overall research outlook reinforces our dedication to support the university's research enterprise and we will continue to seek collaborative and focused opportunities in various sectors to diversify the faculty research portfolio.

Lastly, the Alfred P. Sloan Foundation announced this week that it will partner with University of South Florida to create a University Center of Exemplary Mentoring (UCEMs). Initiated through the Foundation's Minority Ph.D. program, the new partnerships are designed to identify universities with a proven track record of successfully educating underrepresented minority graduate students in STEM disciplines and empower these universities to expand, strengthen, and institutionalize efforts aimed at minority recruitment, mentoring, educational support, and professional development. USF is one of only five centers to be established nationwide.

## Ensure Academic and Future Professional Success for our Students

### **ABET Accreditation Visit**

The following BS programs in our College underwent an ABET accreditation review this academic year: Chemical Engineering, Civil Engineering, Computer Engineering, Computer Science, Electrical Engineering, Industrial Engineering, and Mechanical Engineering. The ABET teams came on campus September 29 for three days. Prior to the campus visit, the ABET accreditation teams assigned to our engineering and computer science programs had reviewed the self-studies from each of our seven programs throughout the summer.

By the time they left campus, the ABET team had found no weaknesses or deficiencies in any of the programs. We expect that when we received the final report from ABET, sometime in August 2014, all of our programs will be accredited for the maximum six years.

Successful ABET accreditation provides our students and prospective employers assurance that our programs meet the same rigorous criteria that other similar engineering and computer science programs across the country and the world must meet. It is a clear indication of the dedication of our faculty and staff to provide our students with a high quality education.

### **One-Year Retention Rate**

The college retention rate increased 6.62% from 2011. The university overall first-year retention rate is 87% for the 2012 cohort.

		Engr	Engr	Remained@ USF
		TOTAL (BEGIN)	TOTAL (END)	% RETENTION (TOTAL)
summer/fall 2012 cohort	FULL TIME	635	571	<b>89.92</b>
summer/fall 2011 cohort	FULL TIME	497	414	83.3

*\*Infomart - Final Benchmark: USF calculates their retention using the final benchmark for full-time, FTIC, summer/fall populations.*

Significant changes occurred in the way first semester engineering students were introduced to the college between the 2011 and 2012 cohorts, which we think can be attributed to the retention improvement. These include the way we advise and how much we advise, the addition of course-based learning communities, the implementation of an early warning system, the required foundations/orientation course, and the expansion of living learning communities.

## Real World Experience: BEST Program

Each BEST project employs five students and the companies pay \$25,000 for the program. Current companies include: CAE, Harris Corporation, OSCOR, and one high profile company that prefers to remain anonymous.

## Internships

The following companies have provided the top internship placements during the past academic year:

MOSAIC	Aerosonic Corporation	West Pharmaceutical Services	
CAE	Sparton Electronics	EarthLinked Technologies	
TECO	Duke Energy	Seminole Electric	
Boyd Industries	Raytheon	Microsoft	Apple
Jabil	JP Morgan Chase & Co	Syniverse	

## Recognition, Awards and Fellowships

The college ranked in the top five nationally for conferring minority PhDs, according to *Diverse Issues in Higher Education's* annual listing of top 100 minority graduate degree producers.

The USF student chapter of INFORMS received the 2012-2013 ***Summa Cum Laude INFORMS Student Chapter Annual Award***, again this year after winning it last year (2011-2012). This is the highest recognition among all INFORMS Student Chapters worldwide.

**Andrea Sanchez**, a doctoral candidate in the Department of Civil and Environmental Engineering, is the recipient of a Society of Hispanic Professional Engineers (SHPE) dissertation fellowship award.

Associate Director of Student Services and Diversity Programs Director, **Bernard Batson** received the Sloan Mentor of the Year Award at the 20<sup>th</sup> Institute of Teaching and Mentoring.

**Trang Luong**, a third-year civil engineering student and **Melissa Butcher**, an Accelerated Program graduate student, were recently named as two of 10 New Faces of Civil Engineering – College Edition by the American Society of Civil Engineers (ASCE). This recognition program promotes the achievement of young civil engineers by highlighting their academic success, volunteerism, and dedication to making a positive impact on society through their chosen profession. The University of South Florida is the only school with two New Faces this year.

**Tylar Murray**, doctoral student in electrical engineering has been awarded the Draper Fellowship. The Draper Laboratory Fellow (DLF) Program typically sponsors 50–60 graduate students each year through a Research Assistant position at the student's university.

**Michael Grady**, a Ph.D. student in the Department of Electrical Engineering, has been selected as one of two winners from a nationwide pool of applicants to receive the IEEE Microwave Theory and Techniques (MTT-S) Graduate Fellowship for Medical Applications for 2014.

**Ileana Wald**, a junior in the Department of Civil and Environmental Engineering, has been selected to participate in the National Science Foundation (NSF) funded Research Experiences in Undergraduate (REU) Water and Health in Limpopo (WHIL) program. She will spend two months during the summer conducting research on water quality and sanitation in Limpopo, South Africa.

**Adrian Johnson**, a doctoral candidate in the Department of Computer Science and Engineering, has been accepted into the prestigious 2014 IEEE Virtual Reality (VR) Doctoral Consortium. The purpose of the doctoral consortium is to help prepare participants to succeed in their research careers and strengthen their ability to effectively lead the VR community in the future.

Students throughout the Southeastern United States and Puerto Rico met on the University of South Florida Tampa campus for three days as the USF Civil and Environmental Engineering Dept. hosted the annual American Society of Civil Engineers **2014 Southeast Student Conference**.

### **Achieve and Sustain National Recognition in Research**

#### **NSF CAREER Awards**

Electrical Engineering Assistant Professor **Gokhan Mumcu** received a CAREER Award from the National Science Foundation for his proposal: "Microfluidically Loaded Highly Reconfigurable Compact RF Devices." The four-year award totals \$400,000.

Electrical Engineering Assistant Professor **Selcuk Kose** has been awarded a five-year CAREER Award from the National Science Foundation. Kose's award totals \$450,000 over the five years.

#### **Other Awards**

**Richard Gitlin**, professor in the Electrical Engineering Dept. and member the National Academy of Engineering received the Distinguished University Professor honor.

Professor **Babu Joseph** and Assistant Professor **John Kuhn**, both of the Chemical and Biomedical Engineering Dept., received the Excellence in Innovation Award.

**Arash Takshi**, assistant professor in the Electrical Engineering Dept. received the Outstanding Undergraduate Teaching Award.

**Srinivas Katkooori**, professor in the Computer Science and Engineering Dept., received the Jerome Krivanek Distinguished Teacher Award.

**Autar Kaw**, professor in the Mechanical Engineering Dept. received the Kosove Distinguished Undergraduate Teaching and Service Award.

**David Eddins**, interdisciplinary biomedical engineering professor from the Dept. of Communication Sciences and Disorders, received the Outstanding Faculty Research Achievement Award.

Distinguished University Professor, **Yogi Goswami**, PhD, PE, was granted Fellow of the American Society of Heating, Refrigerating and Air Conditioning Engineers (ASHRAE). Fellow ASHRAE is a membership grade that recognizes members who have attained distinction and made substantial contributions in HVAC&R and the built environment such as education, research, engineering design and consulting, invention, engineer executive on significant projects, publications, presentations and mentoring.

**Laura Byrnes-Blanco**, a senior in the Department of Mechanical Engineering, has been awarded a prestigious NSF Graduate Research Fellowship. NSF received over 14,000 applications for the 2014 Graduate Research Fellowship Program (GRFP) competition, and made 2,000 fellowship award offers.

**Michael Esteban**, a fourth-year student in the Department of Civil and Environmental Engineering, has been awarded a summer internship position in the 2014 Re-Inventing the Nation's Urban Water Infrastructure (ReNUWIt)'s Research Experiences for Undergraduates (REU) program at the Colorado School of Mines.

The **USF Wastewater Design Team** received a first place win in the Florida Water Environment Association (FWEA) design competition, which was held at the Florida Water Resources Conference in Orlando

### **Significant Research Grants**

The University of South Florida's Center for Urban Transportation Research (CUTR) has successfully competed for a two year, \$2.8 million federal grant to continue work done through its National Center for Transit Research (NCTR). USF is one of only 35 universities to be selected to receive a University Transportation Center grant from the U.S. Department of Transportation in 2013. The grant allows for the continuation of a program that started at USF in 1991, but requires recipients to be selected through a national competition from more than 100 universities throughout the United States. USF has prevailed in all four competitions conducted for Tier I University Transportation Center grants since 2002, and is the only university in the country to have done so.

**Christopher Passaglia**, associate professor in the Department of Chemical and Biomedical Engineering, is the recipient of a \$388,769 grant from the National Eye Institute/National Institutes of Health.

## **Establish Essential Operational Infrastructure to Achieve the College's Vision**

### **Significant Gifts to the College**

The College's Development Office continues to engage with organizations and alumni around the country. In addition to these significant contributions listed, the development team has met with engineering alumni groups in Atlanta and San Francisco.

### **Endowment**

Delbert Kimbler, PhD, a 1976 USF graduate in industrial engineering, created a \$250,000 endowment which established the Del and Beth Kimbler Lecture Series in Industrial and Management Systems Engineering. Dr. Kimbler is a professor emeritus at Clemson University. Standing with Dr. Kimbler is one of his former USF graduate students, Professor Tapas Das, who is now chair of the Industrial and Management Systems Dept.

### **Faculty Research and Engagement Grant**



Associate Professor of Computer Science and Engineering, **Anda Iamnitchi**, received the Yahoo Faculty Research and Engagement Program Grant for her proposal "Understanding and Mitigating the Social Contagion of Unethical Behavior in User-Generated Content Systems."

### **New Scholarships**

**Alvin** and **Jennifer Agana**, along with **Bijan Barrera**, present a check to interim Dean Rafael Perez to establish the Michael Agana Memorial Scholarship Fund.



The **American Society of Mechanical Engineers** established a scholarship for Mechanical Engineering Students

USF Alum **Myra Cooley '72** and her husband, Mack, established the Myra and Mack Cooley Scholarship Fund



## METRICS

### US News and World Report Best Engineering Schools Rankings

#### Ranking Metrics for University of South Florida

	2014	2015	Change (2014–2015)	
Rank	105	110	<b>DOWN</b>	<b>5</b>
Public Rank	69	73	<b>DOWN</b>	<b>4</b>
Score	20	20	<b>NO CHANGE</b>	
Total graduate engineering enrollment	822	865	<b>UP</b>	<b>43</b>
Research expenditures per faculty member	\$269,790	\$285,766	<b>UP</b>	<b>\$15,976</b>
Engineering school research expenditures	\$28,327,966	\$30,577,000	<b>UP</b>	<b>\$2,249,034</b>
Average quantitative GRE score of new entrants in both master's and doctoral programs	739 (old) 156 (new)	730 (old) 158 (new)	<b>DOWN</b> <b>UP</b>	<b>9</b> <b>2</b>
Overall acceptance rate	47.60%	50.3%	<b>UP</b>	<b>2.7%</b>
Faculty membership in National Academy of Engineering	.93 %	.90 %	<b>DOWN</b>	<b>0.03%</b>
Peer assessment score (5.0=highest)	2.2	2.2	<b>NO CHANGE</b>	
Recruiter assessment score (5.0=highest)	2.4	2.5	<b>UP</b>	<b>.1</b>
Ph.D. students/faculty	3.1	3.0	<b>DOWN</b>	<b>0.1</b>
Ph.D.'s granted	53	49	<b>DOWN</b>	<b>4</b>
Fall FT TT Faculty	107	110	<b>UP</b>	<b>3</b>
Fall FT Master's Students	280	327	<b>UP</b>	<b>47</b>
Master's students/faculty	2.6	2.97	<b>UP</b>	<b>.37</b>
Tuition	In-state, full-time: \$10,410 per year Out-of-state, full-time: \$20,600 per year	In-state, full-time: \$10,428 per year Out-of-state, full-time: \$21,126 per year	<b>In-state, full-time: UP \$18 per year Out-of-state, full-time: UP \$526 per year</b>	

Source: U.S. News & World Report 2015 Rankings Engineering Graduate Programs

## 2015 Rankings of Florida Universities with Graduate Engineering Programs

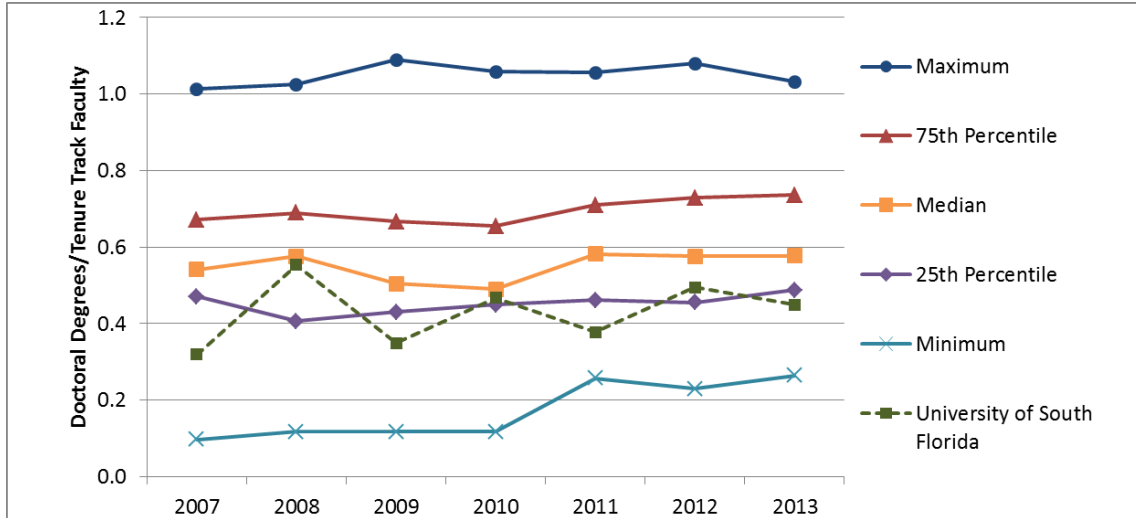
	Rank					
	2010	2011	2012	2013	2014	2015
University of Florida	25	30	30	35	38	42
University of Central Florida	86	73	70	72	72	81
Florida State University/Florida A&M University		102	92	102	112	102
University of South Florida		119	112	109	105	110
University of Miami		116	122	121	116	116
Embry Riddle		RNP	RNP	RNP	RNP	129
Florida Atlantic University		RNP	RNP	RNP	RNP	RNP
Florida Institute of Technology		RNP	RNP	RNP	RNP	RNP
Florida International University		RNP	RNP	RNP	RNP	RNP
<i>Total Ranks</i>	<i>90</i>	<i>137</i>	<i>138</i>	<i>144</i>	<i>143</i>	<i>140</i>
<i>Total Schools Ranked</i>	<i>95</i>	<i>143</i>	<i>151</i>	<i>150</i>	<i>147</i>	<i>145</i>
<i>Total Schools</i>	<i>198</i>	<i>198</i>	<i>198</i>	<i>198</i>	<i>199</i>	<i>211</i>

From 2013 to 2014...						
<b>Schools USF moved above:</b>						
University of Maryland-Baltimore County		107	118	119	105	116
Wichita State University		94	107	102	105	116
<b>Schools USF moved down to tie with:</b>						
Tulane University-New Orleans		107	112	102	105	110
CUNY-City College (Grove)		129	102	109	105	110
<b>Schools that moved up to tie with USF:</b>						
Oklahoma State University		109	112	109	112	110
University of Alabama		107	122	109	112	110
George Mason University		121	125	114	112	110

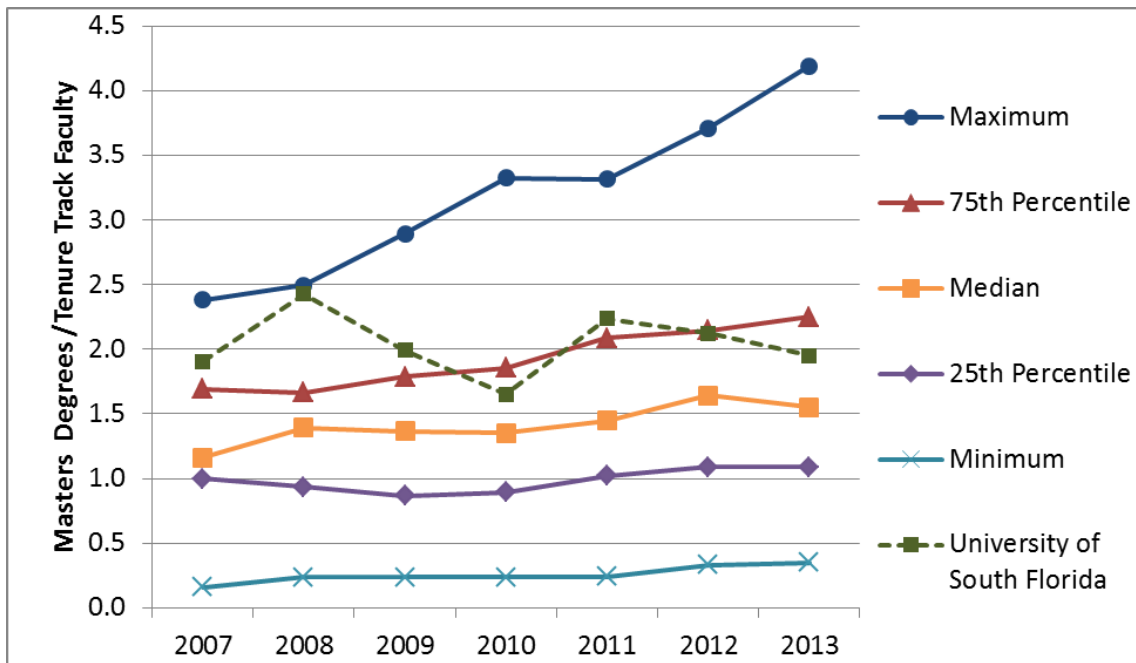
Source: U.S. News & World Report 2015 Rankings

**AAU Public University Performance Comparison** (Source 2013 ASEE Survey)

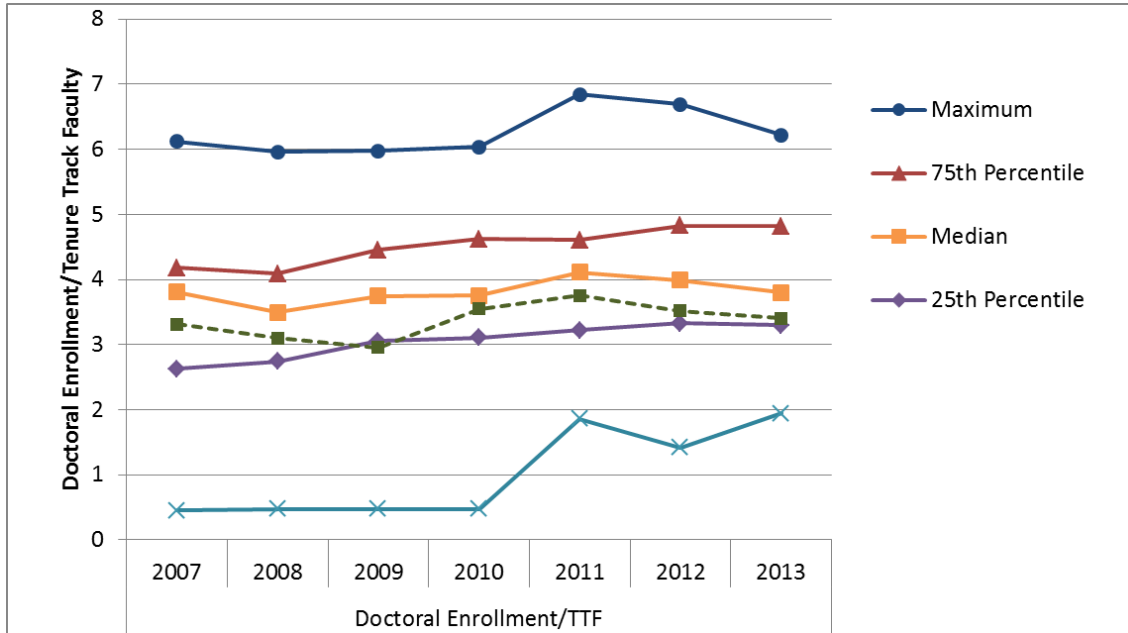
**Doctoral Degrees per Tenure Track Faculty**



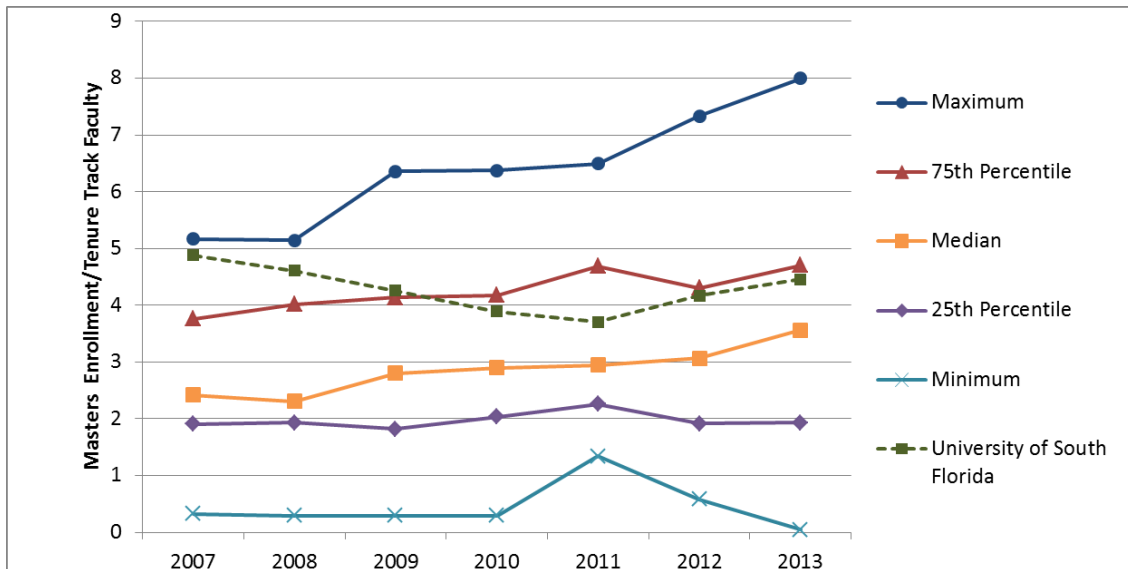
**Master's Degrees per Tenure Track Faculty**



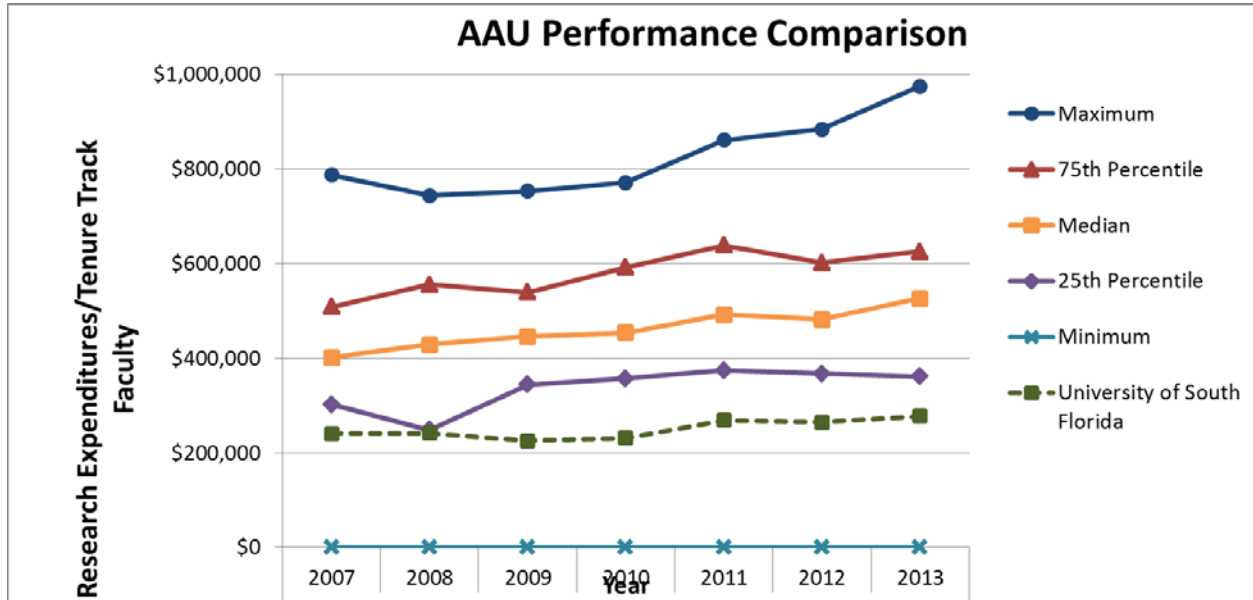
### Doctoral Enrollment per Tenure Track Faculty



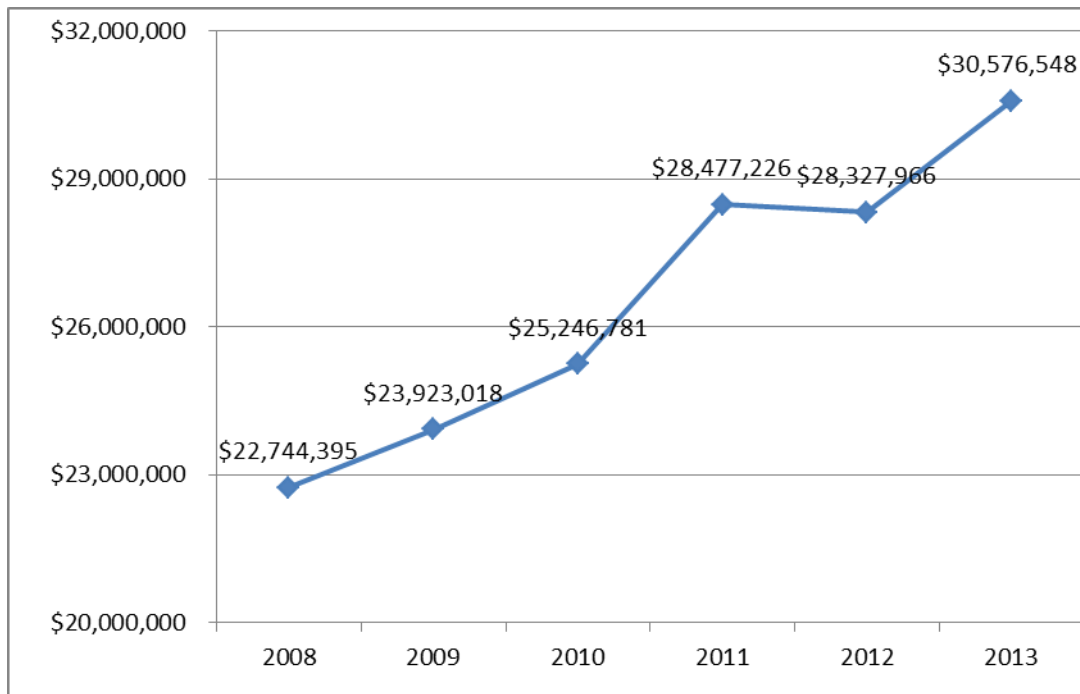
### Master's Enrollment per Tenure Track Faculty



## Research Expenditures per Tenure Track Faculty



## Research Expenditures



1. Student Enrollment

	AY		SCH			AY		SCH			AY		SCH			AY	
	SCH	FTE	2011-2012			SCH	FTE	2012-2013			SCH	FTE	Current year (2013-2014) - Actual			SCH	FTE*
	2010/2011	2010/2011	Summer 2011 Final	Fall 2011 Final	Spring 2012 Final	2011/2012	2011/2012	Summer 2012 Final	Fall 2012 Final	Spring 2013 Final	2012/2013	2012/2013	Summer 2013 Final	Fall 2013 Final	Spring 2014 Preliminary	2013/2014	2013/2014
<b>Engineering</b>																	
Lower Level	4,126	103	663	1,773	1,746	4,182	105	459	1,515	1,663	3,637	91	387	1,497	1,416	3,300	83
Upper Level	41,119	1,028	5,983	17,632	18,429	42,044	1,051	6,381	18,799	20,544	45,724	1,143	6,257	21,270	21,797	49,324	1,233
Grad I	7,464	233	791	3,193	2,857	6,841	214	858	3,489	2,894	7,241	226	760	3,545	3,653	7,958	249
Grad II	6,999	219	1,188	2,924	2,916	7,028	220	1,084	2,866	2,691	6,641	208	825	2,842	2,689	6,356	199
<b>Total</b>	<b>59,708</b>	<b>1,583</b>	<b>8,625</b>	<b>25,522</b>	<b>25,948</b>	<b>60,095</b>	<b>1,589</b>	<b>8,782</b>	<b>26,669</b>	<b>27,792</b>	<b>63,243</b>	<b>1,668</b>	<b>8,229</b>	<b>29,154</b>	<b>29,555</b>	<b>66,938</b>	<b>1,763</b>
<b>Internal %</b>																	
Lower Level	6.9%	6.5%	7.7%	6.9%	6.7%	7.0%	6.6%	5.2%	5.7%	6.0%	5.8%	5.5%	4.7%	5.1%	4.8%	4.9%	4.7%
Upper Level	68.9%	64.9%	69.4%	69.1%	71.0%	70.0%	66.1%	72.7%	70.5%	73.9%	72.3%	68.5%	76.0%	73.0%	73.8%	73.7%	69.9%
Grad I	12.5%	14.7%	9.2%	12.5%	11.0%	11.4%	13.5%	9.8%	13.1%	10.4%	11.4%	13.6%	9.2%	12.2%	12.4%	11.9%	14.1%
Grad II	11.7%	13.8%	13.8%	11.5%	11.2%	11.7%	13.8%	12.3%	10.7%	9.7%	10.5%	12.4%	10.0%	9.7%	9.1%	9.5%	11.3%
<b>Total</b>	<b>100%</b>		<b>14.4%</b>	<b>42.5%</b>	<b>43.2%</b>	<b>100%</b>		<b>13.9%</b>	<b>42.2%</b>	<b>43.9%</b>	<b>100%</b>		<b>12.3%</b>	<b>43.6%</b>	<b>44.2%</b>	<b>100%</b>	
<b>Change from Prior Year</b>																	
Lower Level	-4.8%		-7.9%	1.7%	5.0%	1.4%		-30.8%	-14.6%	-4.8%	-13.0%		-15.7%	-1.2%	-14.9%	-9.3%	
Upper Level	2.4%		-3.6%	3.0%	3.5%	2.2%		6.7%	6.6%	11.5%	8.8%		-1.9%	13.1%	6.1%	7.9%	
Grad I	-20.0%		-15.9%	-7.0%	-7.5%	-8.3%		8.5%	9.3%	1.3%	5.8%		-11.4%	1.6%	26.2%	9.9%	
Grad II	52.8%		23.4%	-4.3%	-2.2%	0.4%		-8.8%	-2.0%	-7.7%	-5.5%		-23.9%	-0.8%	-0.1%	-4.3%	
<b>Total</b>	<b>2.2%</b>		<b>-2.3%</b>	<b>0.7%</b>	<b>1.6%</b>	<b>0.6%</b>		<b>1.8%</b>	<b>4.5%</b>	<b>7.1%</b>	<b>5.2%</b>		<b>-6.3%</b>	<b>9.3%</b>	<b>6.3%</b>	<b>5.8%</b>	

Fall Student Headcount by Residency

	Undergraduate					Graduate					Total				
	In-State		Out-State		Total UG	In-State		Out-State		Total Grad	In-State		Out-State		Total
	Headcount	%	Headcount	%		Headcount	%	Headcount	%		Headcount	%	Headcount	%	
	Headcount	%	Headcount	%	Total UG	Headcount	%	Headcount	%	Total Grad	Headcount	%	Headcount	%	Total
Fall 2009	2,766	95%	132	5%	2,898	490	64%	277	36%	767	3,256	89%	409	11%	3,665
Fall 2010	2,766	95%	146	5%	2,912	485	59%	335	41%	820	3,251	87%	481	13%	3,732
Fall 2011	2,795	94%	164	6%	2,959	447	56%	350	44%	797	3,242	86%	514	14%	3,756
Fall 2012	3,125	93%	220	7%	3,345	436	53%	391	47%	827	3,561	85%	611	15%	4,172
Fall 2013	3,399	91%	329	9%	3,728	425	49%	449	51%	874	3,824	83%	778	17%	4,602

Fall Student Headcount Trends

	Undergraduate	Masters	Doctoral Research	Total
Fall 2009	2,898	452	315	3,665
Fall 2010	2,912	431	389	3,732
Fall 2011	2,959	395	402	3,756
Fall 2012	3,345	452	375	4,172
Fall 2013	3,728	500	374	4,602

**Fall Student Headcount Percentages (Full-Time/Part-Time)**

	UnderGraduate			Graduate			Total		
	Full-Time	Part-Time	Total	Full-Time	Part-Time	Total	Full-Time	Part-Time	Total
Fall 2009	2,252	646	2,898	474	293	767	2,726	939	3,665
Fall 2010	2,322	590	2,912	527	293	820	2,849	883	3,732
Fall 2011	2,378	581	2,959	531	266	797	2,909	847	3,756
Fall 2012	2,679	666	3,345	520	307	827	3,199	973	4,172
Fall 2013	2,940	788	3,728	531	343	874	3,471	1,131	4,602

	UnderGraduate		Graduate		Total	
	% Full-Time	% Part-Time	% Full-Time	% Part-Time	% Full-Time	% Part-Time
Fall 2009	78%	22%	62%	38%	74%	26%
Fall 2010	80%	20%	64%	36%	76%	24%
Fall 2011	80%	20%	67%	33%	77%	23%
Fall 2012	80%	20%	63%	37%	77%	23%
Fall 2013	79%	21%	61%	39%	75%	25%

**Tuition and Waiver**

Engineering	Gross Revenue	Total Waivers	Net Revenue
<b>FY 11</b>			
Total Undegraduate	\$ 6,001,211	\$ (166,292)	\$ 5,834,919
Total Graduate	\$ 4,517,588	\$ (1,692,229)	\$ 2,825,359
Grand Total	\$ 10,518,800	\$ (1,858,521)	\$ 8,660,278
<b>FY 12</b>			
Total Undegraduate	\$ 6,653,086	\$ (85,595)	\$ 6,567,491
Total Graduate	\$ 5,282,760	\$ (1,761,189)	\$ 3,521,570
Grand Total	\$ 11,935,846	\$ (1,846,785)	\$ 10,089,061
<b>FY 13</b>			
Total Undegraduate	\$ 8,062,671	\$ (129,728)	\$ 7,932,943
Total Graduate	\$ 6,135,412	\$ (1,951,775)	\$ 4,183,637
Grand Total	\$ 14,198,084	\$ (2,081,503)	\$ 12,116,580
<b>FY 14 (Estimated)</b>			
Total Undegraduate	\$ 8,592,386	\$ (138,251)	\$ 8,454,135
Total Graduate	\$ 6,306,896	\$ (2,006,327)	\$ 4,300,569
Grand Total	\$ 14,899,282	\$ (2,144,578)	\$ 12,754,704
<b>FY 15 (Estimated)</b>			
Total Undegraduate	\$ 8,351,603	\$ (134,377)	\$ 8,217,226
Total Graduate	\$ 6,130,159	\$ (1,950,104)	\$ 4,180,055
Grand Total	\$ 14,481,762	\$ (2,084,481)	\$ 12,397,281

### Student Flow

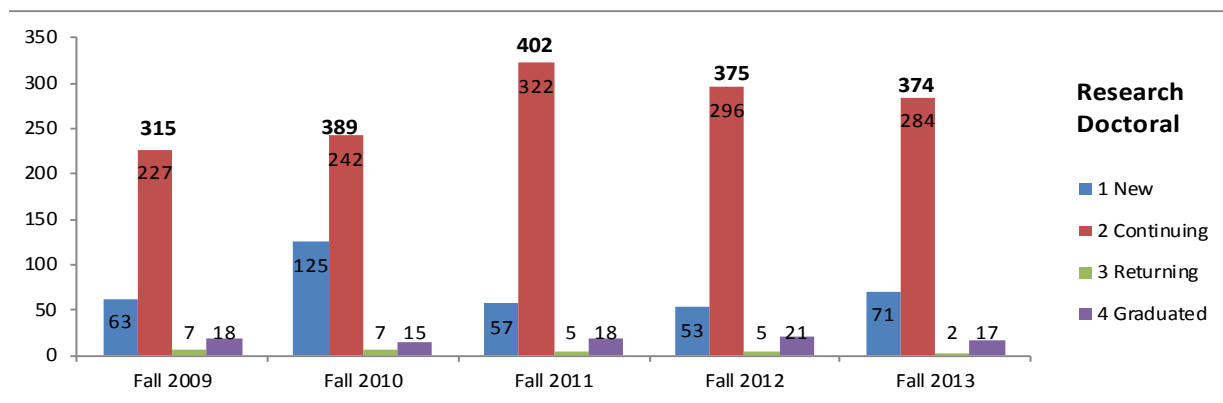
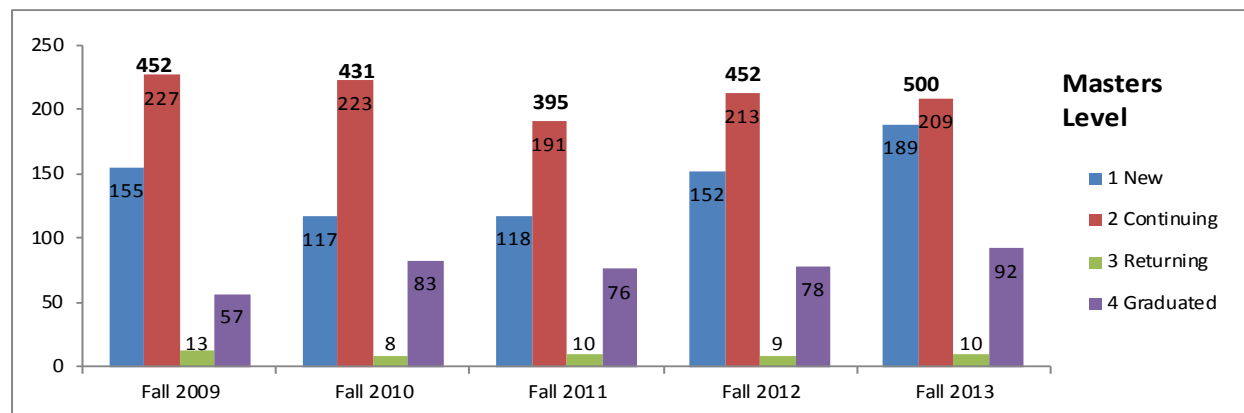
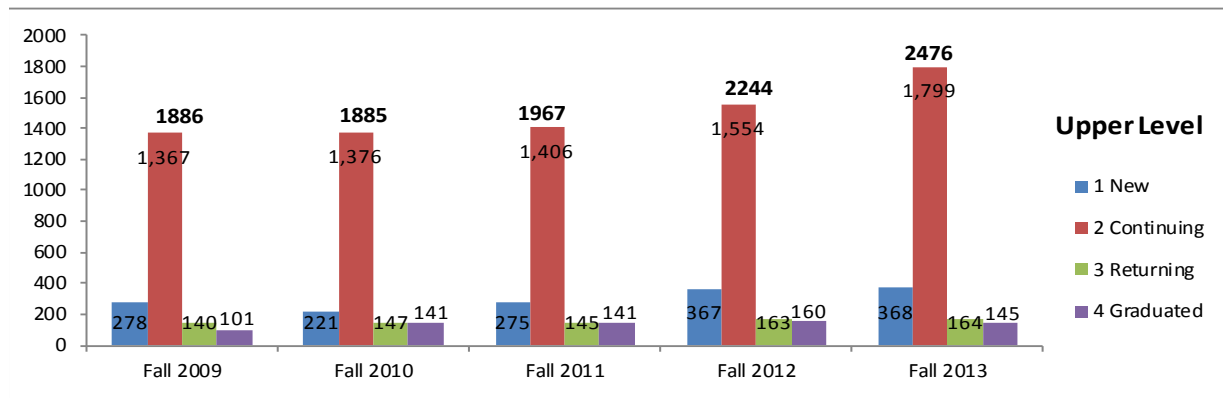
### Engineering

	2009-10	2010-11	2011-12	2012-13	2013-14*	
<b>Annual Unduplicated Headcounts</b>	Undergraduate	3,051	3,076	3,247	3,799	4,126
	Master	574	575	539	580	699
	Research Doctoral	363	433	445	412	415
	<b>Total</b>	<b>3,988</b>	<b>4,084</b>	<b>4,231</b>	<b>4,791</b>	<b>5,240</b>

Source: USF InfoCenter

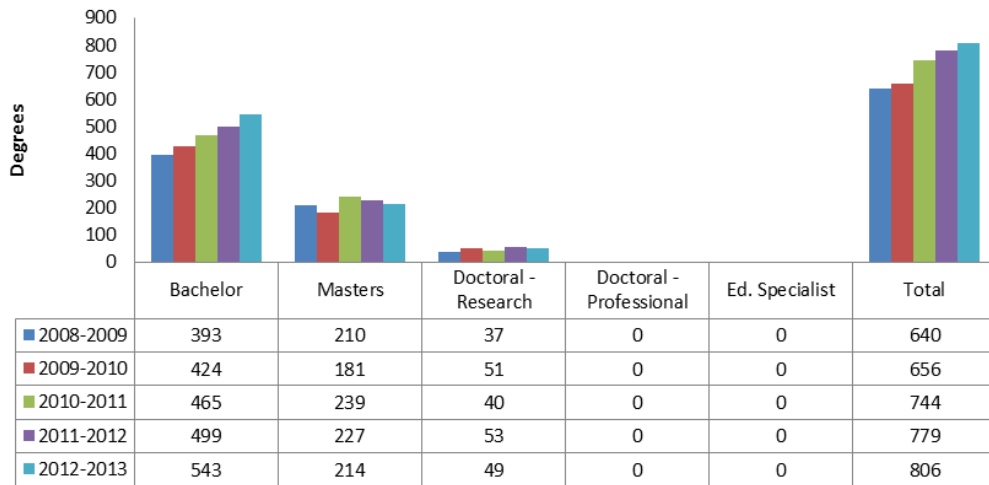
\*For 2013-14 annual unduplicated headcounts, spring 2013 data is based on preliminary benchmark

Student Flow Pivot Chart for Each Degree Level





**Degrees Awarded Trends**

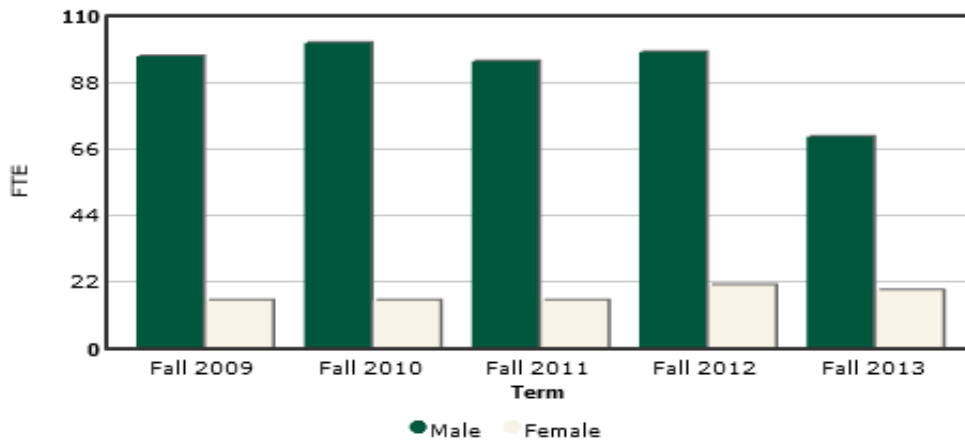


**Degree Awarded by Areas of Strategic Emphasis**

Strategic Emphasis Group		2008-2009	2009-2010	2010-2011	2011-2012	2012-2013
STEM	Bachelor	393	424	465	499	543
	Doctoral - Research	37	51	40	53	49
	Masters	210	181	239	227	214

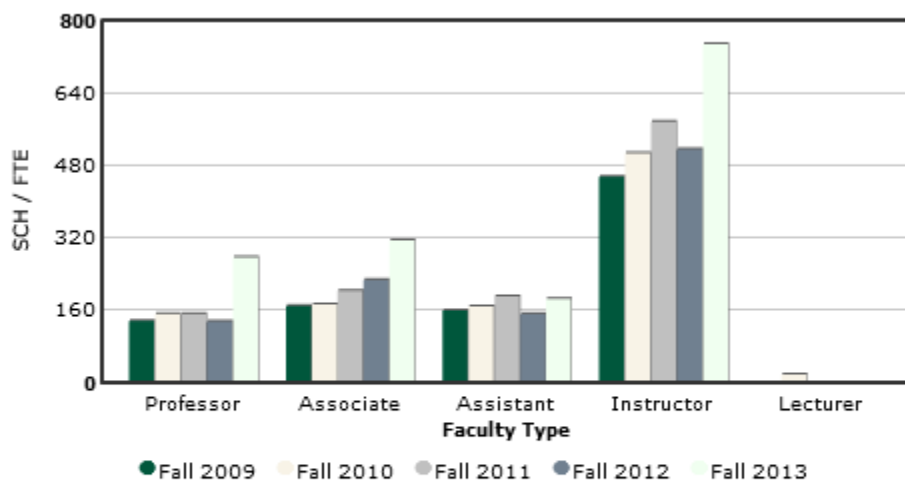
**2. Instructional Productivity**

**Fall Instructional Faculty FTE**



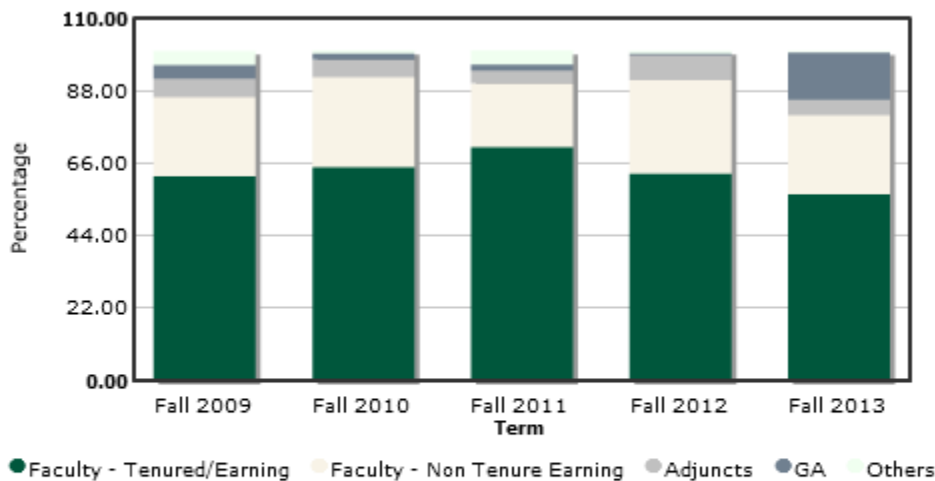
TERM	MALE	FEMALE	TOTAL	DETAIL
FALL 2009	96.63	16.00	112.63	<a href="#">DETAIL</a>
FALL 2010	100.97	16.00	116.97	<a href="#">DETAIL</a>
FALL 2011	94.92	16.00	110.92	<a href="#">DETAIL</a>
FALL 2012	97.89	21.00	118.89	<a href="#">DETAIL</a>
FALL 2013	69.96	19.22	89.18	<a href="#">DETAIL</a>

Fall SCH Per Ranked Instructional FTE



TERM	PROFESSOR	ASSOCIATE	ASSISTANT	INSTRUCTOR	LECTURER
FALL 2009	136.04	169.10	158.54	453.48	0.00
FALL 2010	151.69	172.35	168.19	505.64	18.00
FALL 2011	151.50	202.67	189.99	575.00	0.00
FALL 2012	134.35	226.76	151.26	514.20	0.00
FALL 2013	275.91	313.57	184.69	746.51	0.00

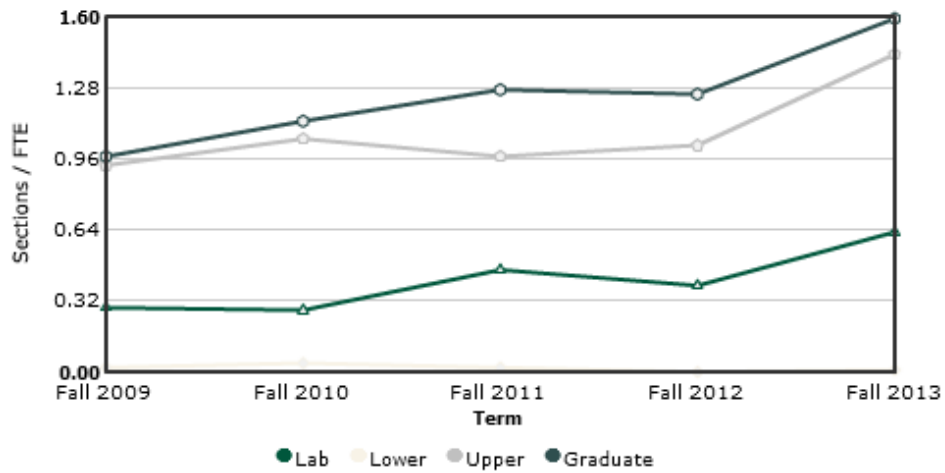
Percentage of SCH by Instructor Type



TERM	TEN/EARN	NON TEN	ADJUNCTS	GA	OTHER
FALL 2009	61.94	24.04	5.55	4.20	4.27
FALL 2010	64.68	27.42	5.21	1.79	0.90
FALL 2011	70.84	19.32	3.85	1.75	4.24
FALL 2012	62.75	28.34	7.62	0.51	0.78
FALL 2013	56.49	23.95	4.72	14.36	0.47

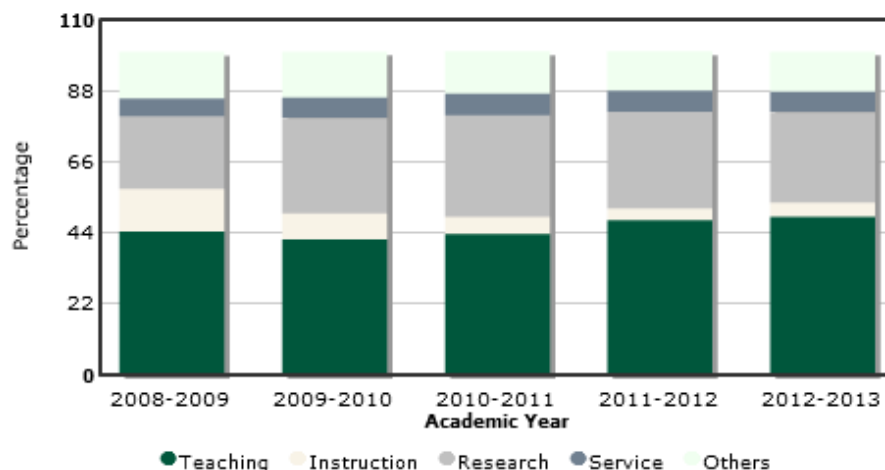
Undergraduate SCH by Full-Time Faculty for Fall 2011, 2012 and 2013**									
21- Engineering	Fall 2011			Fall 2012			Fall 2013		
	Total UG SCH	UG SCH by FT Faculty	Percent by FT Faculty	Total UG SCH	UG SCH by FT Faculty	Percent by FT Faculty	Total UG SCH	UG SCH by FT Faculty	Percent by FT Faculty
2101 College Of Engineering	933	804	86.2%	490	490	100.0%	69	69	100.0%
2103 Industrial & Mgmt Systems	3,082	2,537	82.3%	3,446	2,895	84.0%	3,852	2,864	74.4%
2104 Civil & Environmental Engr	4,081	3,970	97.3%	3,673	3,055	83.2%	7,696	3,382	43.9%
2105 Mechanical Engineering	3,231	2,988	92.5%	3,371	3,336	99.0%	3,816	3,663	96.0%
2106 Electrical Engineering	3,571	3,247	90.9%	3,706	3,529	95.2%	3,563	3,263	91.6%
2107 Chemical & Biomedical Engrng	1,901	1,901	100.0%	2,194	2,066	94.2%	3,677	3,677	100.0%
2108 Computer Science Engineering	3,981	3,858	96.9%	4,439	4,369	98.4%	4,319	4,319	100.0%
2111 Engineering Research							14		0.0%
2114 Engr Diversity & Outreach	47		0.0%						
2116 Engineering Academic Advising							27		0.0%
2117 Ctr For Urban Transportation							108	108	100.0%
<b>21-Engineering Total</b>	<b>20,827</b>	<b>19,305</b>		<b>21,319</b>	<b>19,740</b>		<b>27,141</b>	<b>21,346</b>	
<i>* Tampa Only</i>									
<i>** Includes payplans: 01-Extra State Compensation, 02-Phased Retirement, 06-Faculty Adjunct, 21-A&amp;P, and 22-Faculty</i>									

Fall Sections Per Tenured/Earning Faculty FTE



TERM	LAB	LOWER	UPPER	GRAD	TOTAL
FALL 2009	0.29	0.02	0.93	0.97	2.21
FALL 2010	0.28	0.04	1.05	1.13	2.49
FALL 2011	0.46	0.02	0.97	1.27	2.72
FALL 2012	0.39	0.00	1.02	1.25	2.65
FALL 2013	0.63	0.01	1.43	1.59	3.66

Percentage of Activity for Ranked Faculty by Activity Type



ACADEMIC YEAR	TEACHING	INSTRUCTION	RESEARCH	SERVICE	OTHER
2008-2009	44.35	13.19	22.46	5.54	14.45
2009-2010	41.96	8.07	29.49	6.28	14.20
2010-2011	43.55	5.42	31.36	6.69	12.98
2011-2012	47.89	3.66	29.88	6.46	12.11
2012-2013	48.92	4.47	28.00	6.23	12.38

Faculty Activity Groupings

Teaching	Credit bearing course delivery, supervision of teaching and interns, directed study, thesis, dissertation
Instruction	Advising, course prep, curriculum development, non-credit instruction, co-op and teaching medical residents
Research	Funded Research, departmental research
Service	Public service, state mandated service, clinical service
Other	University governance, academic administration, release, paid patient care, release UFF, leave of absence

### 3. Space Utilization, Class Size and Sections by Start Time

#### Class Size - Fall 2013

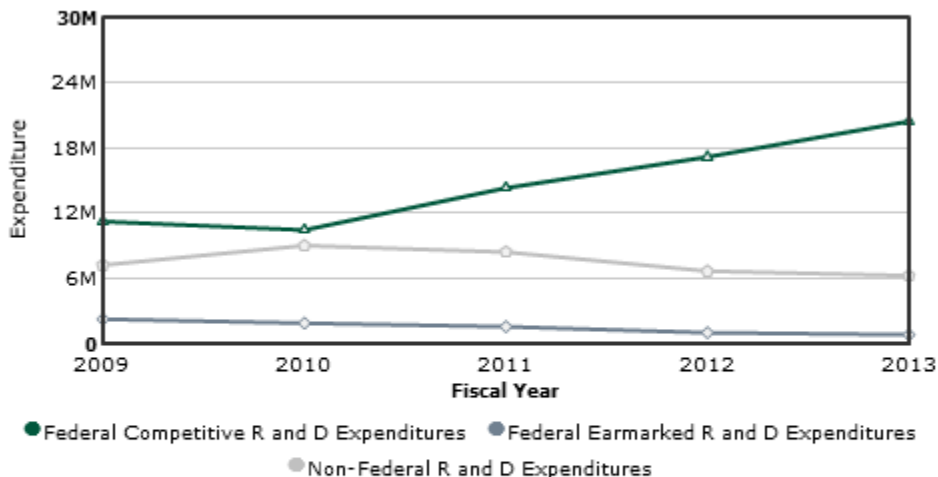
Sections – Class, Lab, and Discussion									
Enrollment	0 - 9	10 - 19	20 - 29	30 – 39	40 - 49	50 - 99	100 +	Total Sections	Mean Enrollment
Undergraduate	12%	19%	15%	11%	13%	24%	5%	182	50.52
Graduate	55%	30%	11%	2%	1%	0%	0%	92	17.9
TOTAL	26%	23%	14%	8%	9%	16%	3%	275	39.54

#### Classroom Sections by Start Time - Fall 2013

Effective Sections Offered																
Day and Time	8 AM	9 AM	10 AM	11 AM	Morning Sections	12 PM	1 PM	2 PM	3 PM	4 PM	5 PM	Afternoon Sections	6 PM	7 PM	8 PM	Evening Sections
Monday	3	5	4	12	24	5	0	10	13	9	2	39	8	0	0	8
Tuesday	11	18	0	14	43	20	0	14	9	1	5	49	4	0	0	4
Wednesday	3	5	4	11	23	6	0	9	14	8	1	38	5	0	0	5
Thursday	11	19	0	13	43	21	0	13	8	1	4	47	7	0	0	7
Friday	4	9	4	7	24	2	0	8	2	0	0	12	1	0	0	1
Total	32	56	12	57	157	54	0	54	46	19	12	185	25	0	0	25

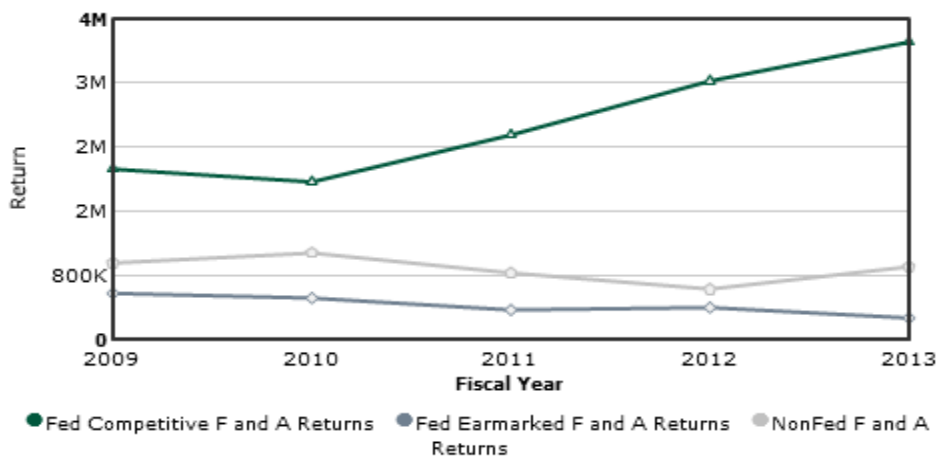
### 4. Research Productivity

Federal and Non-Federal R and D Expenditures



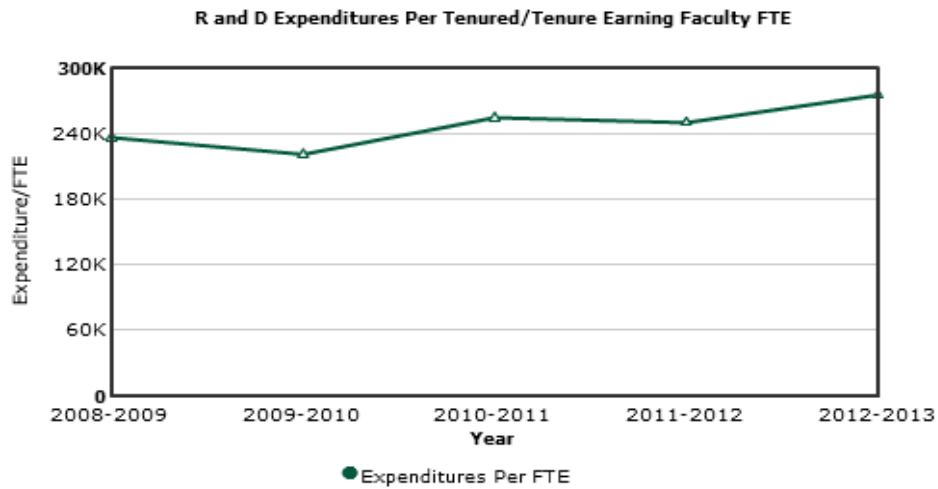
FISCAL YEAR	FEDERAL COMPETITIVE AMOUNT (\$)	FEDERAL EARMARKED AMOUNT (\$)	NON-FEDERAL AMOUNT (\$)	TOTAL R AND D AMOUNT (\$)
2009	11,246,674	2,277,623	7,236,450	20,760,747
2010	10,469,166	1,896,216	9,008,102	21,373,485
2011	14,312,552	1,585,540	8,446,532	24,344,624
2012	17,147,539	1,024,286	6,671,013	24,842,838
2013	20,412,951	842,848	6,253,059	27,508,858

F and A Returns



FISCAL YEAR	FED COMPETITIVE AMOUNT (\$)	FED EARMARKED AMOUNT (\$)	NON FED AMOUNT (\$)	TOTAL F AND A AMOUNT (\$)
2009	2,125,750	577,939	953,244	3,656,933
2010	1,965,434	518,291	1,080,192	3,563,917
2011	2,553,308	370,644	827,577	3,751,529
2012	3,222,050	397,728	627,044	4,246,822
2013	3,712,103	268,903	908,215	4,889,221

Percentage of F&A within R&D				
Fiscal Year	Fed Comp Amount (%)	Fed Earmarked Amount (%)	Non-Fed Amount (%)	Total Amount (%)
2009	18.90	25.37	13.17	17.61
2010	18.77	27.33	11.99	16.67
2011	17.84	23.38	9.80	15.41
2012	18.79	38.83	9.40	17.09
2013	18.19	31.90	14.52	17.77



YEAR	EXP/FTE (\$)
2008-2009	236,237.45
2009-2010	220,827.61
2010-2011	254,278.50
2011-2012	249,726.96
2012-2013	275,250.70

**Proposals and Awards**

Fiscal year	Proposals	Proposals % Change	Awards	Awards % Change
2009	309	0%	88	0%
2010	344	11%	92	4%
2011	327	-4%	102	10%
2012	313	-4%	101	0%
2013	326	4%	93	-7%
* 2014	263	-19%	86	-7%

Fiscal year	Requested Amount (\$)	Req % Change	Awarded Amount (\$)	Awards % Change
2009	115,238,287	0%	21,273,102	0%
2010	107,710,956	-7%	22,282,334	5%
2011	154,870,830	44%	27,912,588	25%
2012	152,253,506	-2%	28,939,262	4%
2013	116,502,480	-23%	55,726,727	93%
* 2014	108,223,597	-7%	24,170,497	-57%

**5. Post-Doctoral Appointments**

**Postdocs:**

	Fall 2009	Fall 2010	Fall 2011	Fall 2012	Fall 2013
<b>Engineering</b>	19	15	13	15	10

**6. National Academy Members and Faculty Awards**

Faculty	Award	Award Year	College	Award Type
Sudeep Sarkar	AAAS Fellow	2013-2014	Engineering	AAU, NRC
Gokhan Mumcu	NSF CAREER Award	2013-2014	Engineering	AAU, TARU, NRC
Selcuk Kose	NSF CAREER Award	2013-2014	Engineering	AAU, TARU, NRC
Alex Savachkin	IIE Annual Award for Excellence in the Teaching of Operations Research	2013-2014	Engineering	Others
Gray Mullins	C. William Bermingham Innovation Award	2013-2014	Engineering	Others
Sudeep Sarkar	IEEE Fellow	2013-2014	Engineering	Others
Yogi Goswami	ASME Technical Communities Globalization Medal	2013-2014	Engineering	Others
Kalanithy Vairavamoorthy	Water Hero	2012-2013	Engineering	AAU
Lawrence Hall	AAAS Fellow	2012-2013	Engineering	AAU, NRC
Nagarajan Ranganathan	AAAS Fellow	2012-2013	Engineering	AAU, NRC
Yicheng Tu	NSF CAREER Award	2012-2013	Engineering	AAU, TARU, NRC
Venkat Bhethanabotla	American Institute of Chemical Engineers Fellow	2012-2013	Engineering	NRC
Autar Kaw	U.S. Professor of the Year	2012-2013	Engineering	Others
Carlos Smith	Fulbright Specialist	2012-2013	Engineering	Others
Lawrence Hall	Norbert Wiener Award	2012-2013	Engineering	Others
Rajan Sen	Jefferson Science Fellow	2012-2013	Engineering	Others
Richard Gitlin	NAI Fellow	2012-2013	Engineering	Others
Yogi Goswami	NAI Fellow	2012-2013	Engineering	Others
Yogi Goswami	AAAS Fellow	2011-2012	Engineering	AAU, NRC
Craig Lusk	NSF CAREER Award	2011-2012	Engineering	AAU, TARU, NRC
Nathan Gallant	NSF CAREER Award	2011-2012	Engineering	AAU, TARU, NRC
Abraham Kandel	Fuzzy Systems Pioneer Award	2011-2012	Engineering	Others
Autar Kaw	ASEE National Outstanding Teaching Medal	2011-2012	Engineering	Others
Daniel Yeh	Bill and Melinda Gates Foundation Award	2011-2012	Engineering	Others
Yogi Goswami	ISES Special Service Award	2011-2012	Engineering	Others

**7. Fund Raising**

**GOAL vs. ATTAINMENT - FY 2012, FY2013, FY 2014 To Date**

College	FY 2012			FY 2013			FY 2014 to Date		
	Goal	Attainment	% Achieved	Goal	Attainment	% Achieved	Goal	Attainment	% Achieved
Engineering	\$ 27,058,000	\$ 27,319,233	101.0%	\$ 26,827,500	\$ 28,082,631	104.7%	\$ 22,400,000	\$ 27,789,681	124%

**FISCAL YEAR COMPARISON - FY 2013 & FY 2014**

College	FY 2013	FY 2014	% Change
	as of 3/22	as of 3/22	
Engineering	\$ 27,232,339	\$ 27,789,681	2.05%

**UNSTOPPABLE CAMPAIGN PROGRESS TO DATE**

College	Campaign	Progress	% of Goal
	Goal	to Date	Achieved
Engineering	\$ 213,250,559	\$ 129,040,240	61%

Source: USF Foundation, College Fundraising Reports as of 3/22/14

**8. Budget**

**Engineering, Fall Employee Headcount**

	<b>F2009</b>	<b>F2010</b>	<b>F2011</b>	<b>F2012</b>	<b>F2013</b>
<b>Instructional Faculty</b>					
Professor	43	49	46	46	48
Associate Professor	22	21	27	30	32
Assist Professor	35	35	30	30	27
Instructor	11	10	8	14	14
Lecturer	2	2			
Ranked Instructional Faculty	113	117	111	120	121
<b>Other &amp; Non-Instructional Faculty</b>					
Faculty Adjunct	57	59	55	53	57
Faculty Adjunct	17	11	9	14	13
Graduate Assistant	337	382	340	314	334
A&P	40	46	48	51	53
USPS	52	55	55	54	47
OPS Other	39	42	51	74	62
Student Assistant	133	145	135	216	211
<b>Total</b>	<b>788</b>	<b>857</b>	<b>804</b>	<b>896</b>	<b>898</b>



<b>2011-12 Operating Budgets</b>						
<b>College of Engineering</b>						
<b>College of Engineering</b>						
<b>Combined E&amp;G and CF</b>	Budget	AA Pending Transfers	Expenses Actual & Planned	RSA	Expense Change	
<b>SALARIES (w/o benefits)</b>						
Instructional Faculty	14,728,519	0	14,481,624	246,895	898,085	7%
Instructional Adjunct	442,700	0	329,283	113,417	8,987	3%
GA	2,605,106	0	2,143,692	461,414	(625,342)	-23%
Non-Instructional Faculty	0	0	0	0	0	-
Non Instructional Staff	3,782,796	0	3,929,887	(147,091)	154,390	4%
Non Instructional OPS Other	436,843	0	539,448	(102,605)	(46,876)	-8%
Subtotal	21,995,964	0	21,423,934	572,030	389,244	2%
<b>Fringe &amp; Awards/Bonus CF ONLY</b>						
Subtotal	4,754,124	0	4,574,302	179,822	(435,968)	-9%
<b>EXPENSE</b>						
Other Operating Expense	1,237,069	0	1,350,598	(113,529)	(77,783)	-5%
Travel	358,405	0	347,399	11,006	24,983	8%
Equipment -OCO	511,265	0	405,244	106,021	(466,900)	-54%
Library Resources	12,125	0	8,925	3,200	8,925	-
Financial Aid/Scholarships	362,962	0	129,675	233,287	4,093	3%
Other	2,670,700	0	2,104,695	566,004	1,136,711	117%
Subtotal	5,152,526	0	4,346,538	805,989	630,028	17%
<b>TOTAL E&amp;G and Carryforward</b>	<b>31,902,615</b>	<b>0</b>	<b>30,344,774</b>	<b>1,557,841</b>	<b>583,305</b>	<b>2%</b>
<b>2012-13 Operating Budgets</b>						
<b>College of Engineering</b>						
<b>College of Engineering</b>						
<b>Combined E&amp;G and CF</b>	Budget	AA Pending Transfers	Expenses Actual & Planned	RSA	Expense Change	
<b>SALARIES (w/o benefits)</b>						
Instructional Faculty	14,670,485	0	13,718,784	951,701	(762,840)	-5%
Instructional Adjunct	315,711	0	339,689	(23,978)	10,406	3%
GA	1,891,866	0	2,049,958	(158,092)	(93,733)	-4%
Non-Instructional Faculty	0	0	0	0	0	-
Non Instructional Staff	3,346,384	0	3,520,008	(173,624)	(409,879)	-10%
Non Instructional OPS Other	443,292	0	551,976	(108,684)	12,528	2%
Subtotal	20,667,739	0	20,180,415	487,323	(1,243,519)	-6%
<b>Fringe &amp; Awards/Bonus CF ONLY</b>						
Subtotal	4,480,811	0	4,071,406	409,405	(502,896)	-11%
<b>EXPENSE</b>						
Other Operating Expense	1,173,365	0	937,313	236,052	(413,286)	-31%
Travel	180,969	0	256,540	(75,570)	(90,860)	-26%
Equipment -OCO	299,815	0	218,506	81,309	(186,739)	-46%
Library Resources	4,500	0	0	4,500	(8,925)	-100%
Financial Aid/Scholarships	295,202	0	108,916	186,286	(20,759)	-16%
Other	(87,171)	0	245,028	(332,198)	(1,859,667)	-88%
Subtotal	1,866,681	0	1,766,302	100,379	(2,580,235)	-59%
<b>TOTAL E&amp;G and Carryforward</b>	<b>27,015,230</b>	<b>0</b>	<b>26,018,123</b>	<b>997,107</b>	<b>(4,326,650)</b>	<b>-14%</b>
<b>2013-14 Operating Budgets</b>						
<b>College of Engineering</b>						
<b>College of Engineering</b>						
<b>Combined E&amp;G and CF</b>	Budget	AA Pending Transfers	Expenses Actual & Planned	RSA	Expense Change	
<b>SALARIES (w/o benefits)</b>						
Instructional Faculty	14,266,775	0	13,545,762	546,353	(173,022)	-1%
Instructional Adjunct	383,158	0	520,536	(137,378)	180,848	55%
GA	1,628,993	0	1,957,137	(328,144)	(92,821)	-4%
Non-Instructional Faculty	0	0	18,000	(18,000)	18,000	-
Non Instructional Staff	3,218,552	0	3,202,401	(105,762)	(317,608)	-8%
Non Instructional OPS Other	637,514	0	474,453	163,061	(77,523)	-14%
Subtotal	20,134,992	0	19,718,290	120,129	(462,126)	-2%
<b>Fringe &amp; Awards/Bonus CF ONLY</b>						
Subtotal	4,149,134	0	4,495,081	(345,947)	423,675	9%
<b>EXPENSE</b>						
Other Operating Expense	812,671	0	870,762	(112,091)	(66,551)	-5%
Travel	93,287	0	185,902	(92,615)	(70,637)	-20%
Equipment -OCO	153,655	0	70,239	83,416	(148,267)	-37%
Library Resources	4,400	0	0	4,400	0	0%
Financial Aid/Scholarships	89,195	0	102,757	(13,562)	(6,159)	-5%
Other	549,946	0	367,746	392,773	122,718	6%
Subtotal	1,703,154	0	1,597,406	262,321	(168,896)	-4%
<b>TOTAL E&amp;G and Carryforward</b>	<b>25,987,280</b>	<b>0</b>	<b>25,810,776</b>	<b>36,504</b>	<b>(207,347)</b>	<b>-1%</b>

College of Engineering - 2010-2011

Instructor Grouping	Term Grouping	Faculty Group	Unique Record	Person Years (FTE)	SCH	%	SCH/FTE	Sal/SCH	Research Expenditures	Rsch/FTE	Term Salary w/ benefits		
Instructional Faculty	FL-SP	Professor	51	34	14,552	29.9%	427	\$510	6,264,566	183,766	7,420,555		
		Associate	22	15	6,532	13.4%	450	\$337	1,976,829	136,052	2,198,152		
		Assistant	38	27	11,093	22.8%	411	\$340	3,167,546	117,491	3,771,825		
		Instructor	15	9	12,538	25.7%	1384	\$78	19,752	2,180	976,772		
		Lecturer	2	1	36	0.1%	40	\$1,494	0	0	53,788		
		Adjunct	14	2	2,626	5.4%	1313	\$47	6,369	3,185	123,888		
		Grad Asst	416	116	1,366	2.8%	12	\$3,974	0	0	5,428,663		
		<b>FL-SP Total</b>			<b>558</b>	<b>204</b>	<b>48,744</b>	<b>100.0%</b>	<b>239</b>	<b>\$410</b>	<b>11,435,062</b>	<b>56,170</b>	<b>19,973,643</b>
		SUMM	Professor	42	8	1,574	20.7%	207	\$1,008	0	0	1,585,692	
			Associate	18	3	631	8.3%	195	\$817	0	0	515,733	
	Assistant	31	6	439	5.8%	77	\$1,767	0	0	775,582			
	Instructor, Lect	11	2	2,199	28.9%	1116	\$82	0	0	179,374			
	Adjunct	9	1	1,225	16.1%	1571	\$42	0	0	51,838			
	Grad Asst	227	23	1,544	20.3%	68	\$607	0	0	936,581			
	<b>SUMM TOTAL</b>		<b>338</b>	<b>42</b>	<b>7,612</b>	<b>100.0%</b>	<b>182</b>	<b>\$531</b>	<b>0</b>		<b>4,044,800</b>		
	AY TOTAL		604	245	56,356		230	\$426	11,435,062		24,018,443		

NonInstructional Faculty	AY TOTAL	All	558	201	9,557		48	\$1,403	12,592,358		13,406,437
--------------------------	----------	-----	-----	-----	-------	--	----	---------	------------	--	------------

College of Engineering - 2011-2012

Instructor Grouping	Term Grouping	Faculty Group	Unique Record	Person Years (FTE)	SCH	%	SCH/FTE	Sal/SCH	Research Expenditures	Rsch/FTE	Term Salary w/ benefits		
Instructional Faculty	FL-SP	Professor	50	34	15,343	31.3%	449	\$486	6,264,566	183,335	7,452,420		
		Associate	27	20	11,129	22.7%	544	\$291	2,690,725	131,640	3,236,799		
		Assistant	30	22	8,989	18.3%	416	\$335	2,252,014	104,115	3,011,208		
		Instructor	11	7	9,934	20.3%	1503	\$68	0	0	679,678		
		Adjunct	16	2	1,892	3.9%	901	\$60	0	0	114,417		
		Grad Asst	375	95	1,209	2.5%	13	\$4,343	0	0	5,251,639		
		Misc Other	1	0	549	1.1%	1484	\$69	0	0	37,702		
		<b>FL-SP Total</b>			<b>510</b>	<b>180</b>	<b>49,045</b>	<b>100.0%</b>	<b>272</b>	<b>\$403</b>	<b>11,207,305</b>	<b>62,180</b>	<b>19,783,863</b>
		SUMM	Professor	44	8	1,749	24.2%	230	\$908	0	0	1,586,791	
			Associate	17	2	313	4.3%	130	\$1,184	0	0	371,157	
	Assistant	29	5	184	2.6%	34	\$3,804	0	0	699,940			
	Instructor, Lect	7	1	2,025	28.1%	1500	\$65	0	0	130,660			
	Adjunct	8	1	1,316	18.2%	2437	\$35	0	0	46,634			
	Grad Asst	213	21	1,626	22.5%	78	\$589	0	0	957,826			
	<b>SUMM TOTAL</b>		<b>318</b>	<b>38</b>	<b>7,213</b>	<b>100.0%</b>	<b>189</b>	<b>\$526</b>	<b>0</b>		<b>3,793,008</b>		
	AY TOTAL		551	218	56,258		258	\$419	11,207,305		23,576,871		

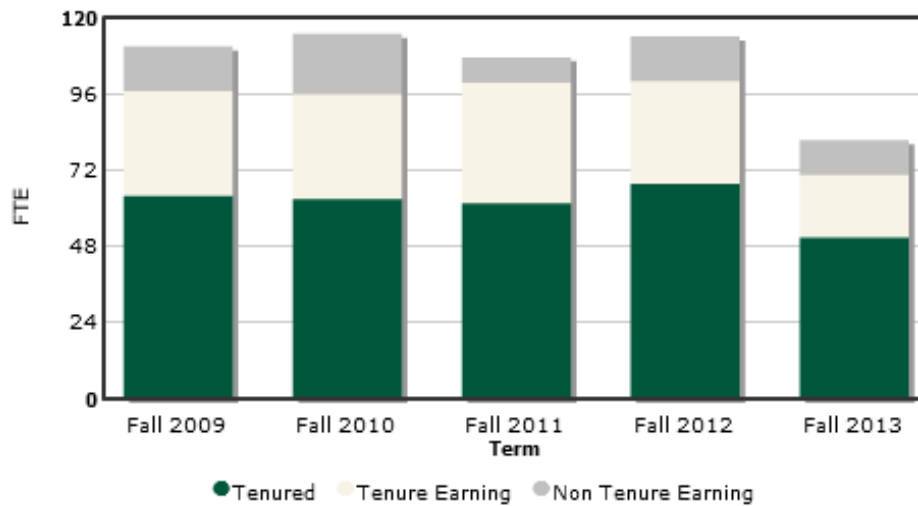
NonInstructional Faculty	AY TOTAL	All	541	175	9,838				12,191,677		13,024,863
--------------------------	----------	-----	-----	-----	-------	--	--	--	------------	--	------------

College of Engineering - 2012-2013

Instructor Grouping	Term Grouping	Faculty Group	Unique Record	Person Years (FTE)	SCH	%	SCH/FTE	Sal/SCH	Research Expenditures	Rsch/FTE	Term Salary w/ benefits
Instructional Faculty	FL-SP	Professor	46	33	12,854	24.6%	384	\$556	7,139,106	213,235	7,145,504
		Associate	31	23	12,122	23.2%	528	\$281	2,713,795	118,094	3,403,414
		Assistant	30	21	7,946	15.2%	374	\$366	2,090,114	98,405	2,909,657
		Instructor	14	10	14,101	27.0%	1362	\$80	0	0	1,131,942
		Adjunct	23	3	3,933	7.5%	1261	\$49	0	0	191,906
		Grad Asst	351	91	1,251	2.4%	14	\$4,165	0	0	5,209,408
FL-SP Total			495	182	52,207	100.0%	287	\$383	11,943,015	65,653	19,991,831
SUMM		Professor	39	7	1,923	24.4%	283	\$769	0		1,478,079
		Associate	21	4	579	7.3%	152	\$986	0		570,984
		Assistant	27	4	235	3.0%	60	\$2,993	0		703,291
		Instructor, Lect	7	1	1,463	18.6%	1161	\$84	0		123,556
		Adjunct	17	1	1,798	22.8%	1536	\$63	0		112,866
		Grad Asst	180	18	1,887	23.9%	103	\$492	0		928,323
SUMM TOTAL			291	35	7,885	100.0%	223	\$497	0		3,917,099
AY TOTAL			539	217	60,092		277	\$398	11,943,015		23,908,930
NonInstructional Faculty	AY TOTAL	All	506	165	11,785				13,774,338		12,932,349

9. Hiring Plan

Fall Faculty FTE by Tenure Status



TERM	TENURED	TENURE EARNING	NON TENURED	TOTAL	DETAIL
FALL 2009	63.79	33.00	14.00	110.79	<a href="#">DETAIL</a>
FALL 2010	62.75	32.99	19.13	114.87	<a href="#">DETAIL</a>
FALL 2011	61.50	37.98	7.99	107.47	<a href="#">DETAIL</a>
FALL 2012	67.59	32.35	14.00	113.94	<a href="#">DETAIL</a>
FALL 2013	50.66	19.68	11.00	81.34	<a href="#">DETAIL</a>